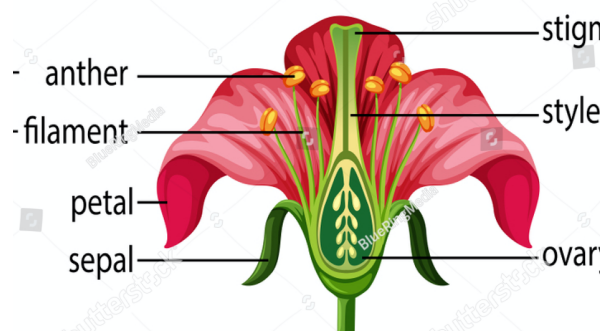


Notable Spring Ephemerals along Miners Castle Road

- Bloodroot (typically 1st spring wildflower to bloom)
- Spring Beauties
- Trout Lily
- Great White Trillium
- Dutchman's Breeches
- Squirrel Corn
- Jack-in-the-Pulpit
- Leeks (Wild Ramps)
- Red Trillium
- Nodding Trillium
- Hybrid Trillium (xNodding and Red)
- Round-Lobed Hepatica
- Cut-leaved Toothwort
- Toothwort
- Rue Anemone (5-10 petals)
- False Anemone (5 petals)
- Wood Anemone
- False Solomon's Seal (Alt lvd, terminal flowers)
- Solomon Seal
- Rose Twisted Stalk (branched)
- Twisted Stalk
- Great Solomon's Seal
- Hairy Solomon's Seal
- Common Blue Violet
- Downy Yellow Violet
- Canada Violet
- Smooth Yellow Violet
- Doll's Eye Baneberry
- Red Baneberry
- Blue Cohosh
- Oregon grape Holly
- Marsh Marigold
- Bird's-eye Primrose
- _____
- _____

Common Flower Parts



Notable Spring Ephemerals along Miners Castle Road

- _____